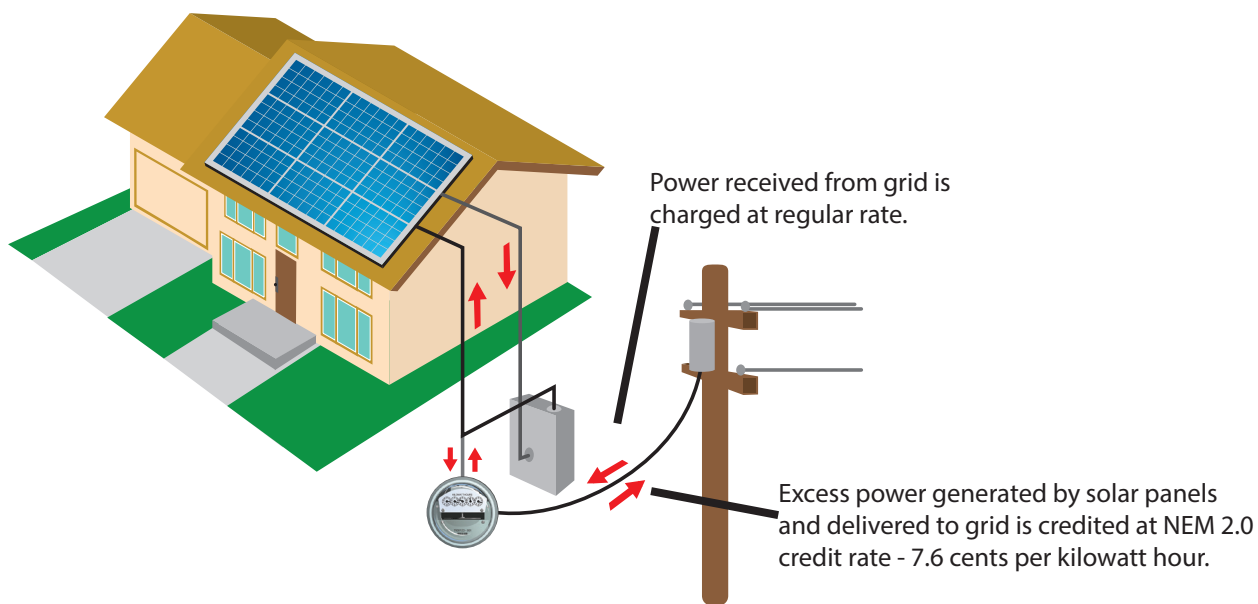


Net Energy Metering 2.0

Net Energy Metering (NEM) 2.0 is the successor to the original NEM program that was closed on December 31, 2016.

How does NEM 2.0 work?

NEM 2.0 allows customers to install solar on their site and use the energy generated from the site to power their home. NEM 2.0 customer generation and consumption are netted in real-time - there is no storage of excess solar generated electricity that can be netted for future use. When the solar panels produce exactly what the customer uses, there will be nothing added to the customer's bill. During times when the solar panels produce more electricity than the customer uses, the net surplus that flows back to the power grid is credited at the NEM 2.0 credit rate - 7.6 cents per kilowatt hour. When the solar panels don't produce enough power for the customer's home, NEM 2.0 customers will pay the same rate as other MID electric customers.



What rate am I charged for electricity that comes from MID and not from my solar panels?

Electricity that comes from MID will be at the same rate as all other customers based on your rate class. More information on MID's electric rates can be found at www.mid.org/tariffs.

What happens if my solar electric system produces more energy than I use?

If the energy produced by the system is greater than the energy you are using at that time, then the excess energy produced is credited to that month's bill at the NEM 2.0 credit rate - 7.6 cents per kilowatt hour.